



# Occupational Health and Safety Certificate





# About the Course

The Occupational Health and Safety Certificate course is an excellent foundation course for those starting a career in this rewarding profession. The course is entry level and is highly recommended for those with little or no health and safety experience.

Held one night per week over 7 months, from CMI School in Dublin 2 and also offered by distance online learning, this is the most popular occupational health and safety programme in Ireland.

CMI Ireland is a leading authority in health and safety education and offers internationally recognised qualifications.

The Certificate in Occupational Health & Safety is awarded by the British Safety Council which is a globally recognised awarding body. BSC awards are government-regulated by Ofqual and are therefore recognised on the Qualifications and Credit Framework (QCF) to level 3 (UK) which is similar to level 5 in the Republic of Ireland. That means your qualification is transferable internationally and recognised by universities should you wish to progress.

## Course Information



The Certificate course is recognised by the Institution of Occupational Safety and Health (IOSH) as meeting the requirements for technician membership of the Institution (Tech IOSH).



Holders of the Level 3 Certificate may also apply for associate membership of the International Institute of Risk and Safety Management (IIRSM).



If you do not have any prior health and safety experience or have never done a health and safety course, it would be recommended you start with the Certificate before progressing to do the Diploma.





# Certificate Details

## Course Aims

Students completing the course will:

1. Have a broad understanding and knowledge of health and safety principles and practice
2. Effectively discharge workplace health and safety responsibilities in any employment sector in any part of the world.
3. Be qualified and meet the criteria to progress to the CMI Diploma in Occupational Health & Safety.

## Entry Requirements

There are no formal entry requirements for the Level 3 Certificate. Non-native English speakers must have a minimum of IOELTS 5.5 or higher OR Cambridge level exams or Advanced English level written English. Supporting certified proof of English level competency is required to be submitted with booking.





# Learning Outcomes

The Programme covers the following core units:

Unit 1: Principles of Health & Safety Management

Unit 2: Control Hazards in the Workplace

• **Unit 1 Principles of Health and Safety Management**

Upon completion of the course you will be able to:

1. Understand the basic principles of law relating to health and safety in the workplace
2. Understand how to organize health and safety in the workplace
3. Understand how to develop a positive health and safety culture in the workplace
4. Understand the principles of accident prevention in the workplace
5. Understand the importance of effective occupational health provision for organisations and people
6. Know the main features of a health and safety management system

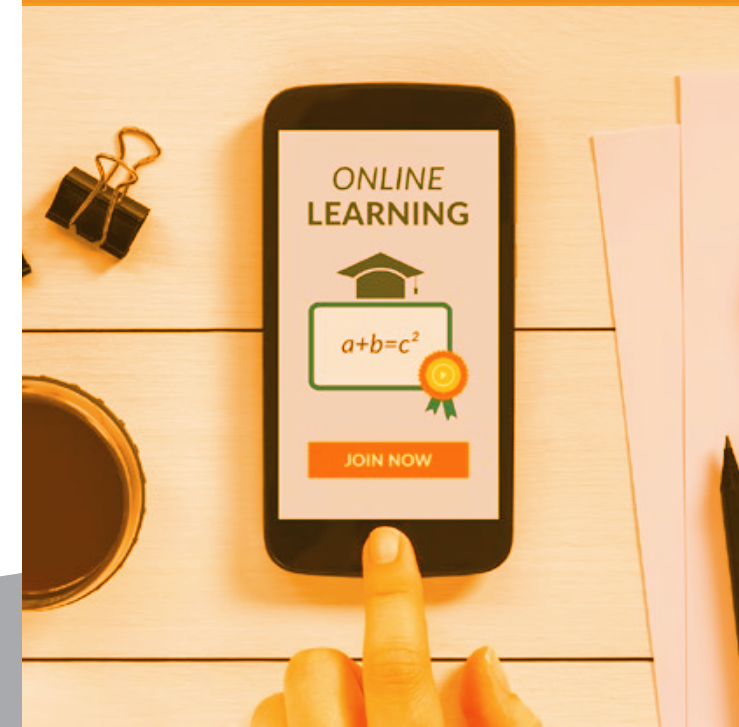
7. Understand the principles of workplace risk assessment

• **Unit 2 Controlling Hazards in the Workplace**

Upon completion of the course you will be able to:

1. Understand the principles of fire prevention in the workplace
2. Understand how to manage emergencies in the workplace
3. Understand the hazards and risks associated with workplace activities
4. Understand how to control risks in the workplace
5. Understand the requirements for reporting and investigating incidents in the workplace
6. Understand how to reduce the impact of workplace activities on the environment

*On average 88%  
of participants  
pass on first  
attempt.*





# Assessment Details

Assessment is via two 90 minute written examinations which test the learning outcomes and assessment criteria

**Unit 1 examination** - This comprises eight compulsory short structured questions.

**Unit 2 examination** - This also comprises eight compulsory short structured questions. In order to achieve the qualification, candidates must pass both units.

Examinations are held January, May and July every year with opportunities to repeat on other date, if required.

## Books

Textbooks are provided with each of the units and sample test questions

## Learning options

Students may chose the course by classroom learning or by online learning with CMI.

Classroom & Distance Students

As a CMI student you will get immediate access to:

- Online Study resources (comprehensive course notes covering each unit)
- 3-4 Live recorded classes which are recorded for playback (additional option)
- Access to online tests to check your understanding after completing each unit
- Classes delivered by Occupational Health & Safety specialists
- Student Q & A forums
- Preparation of Exam questions with Tutor Feedback

## Exams

Three examination sessions are held each year in CMI's exam venue located in Dublin.

### Resits and Resubmissions

Candidates may re-sit an examination at any scheduled examination session upon payment of the appropriate fee.







# Course Details

## Course fee:

Health & Safety Certificate – Online learning : 2,350 Euro

Health & Safety Certificate – Class : 2,550 Euro

**(includes exam and registration fees)**

## Admissions Process

Due to strong demand, places are limited. To enrol, please complete the online booking form and choose pay a deposit of 300euro or full payment. Once your application is reviewed, Admissions will confirm whether you successfully got a place on this course within 48 hours.

Full course fees are required before commencement of the course. If you prefer, a deposit or full payment can be made over the phone instead of online (Laser or Credit card).

## Sponsorship/Funding

Where a Sponsor has agreed to pay for your chosen course, please complete the relevant section on the booking form and advise Admissions. An invoice is then raised and forwarded to your sponsor. To secure your place, sponsored applicants must still pay an online booking deposit and complete the online booking form which will be refunded upon full receipt of fees from the sponsor. Once payment is received in full for the course by the sponsor, you will receive the deposit refund.

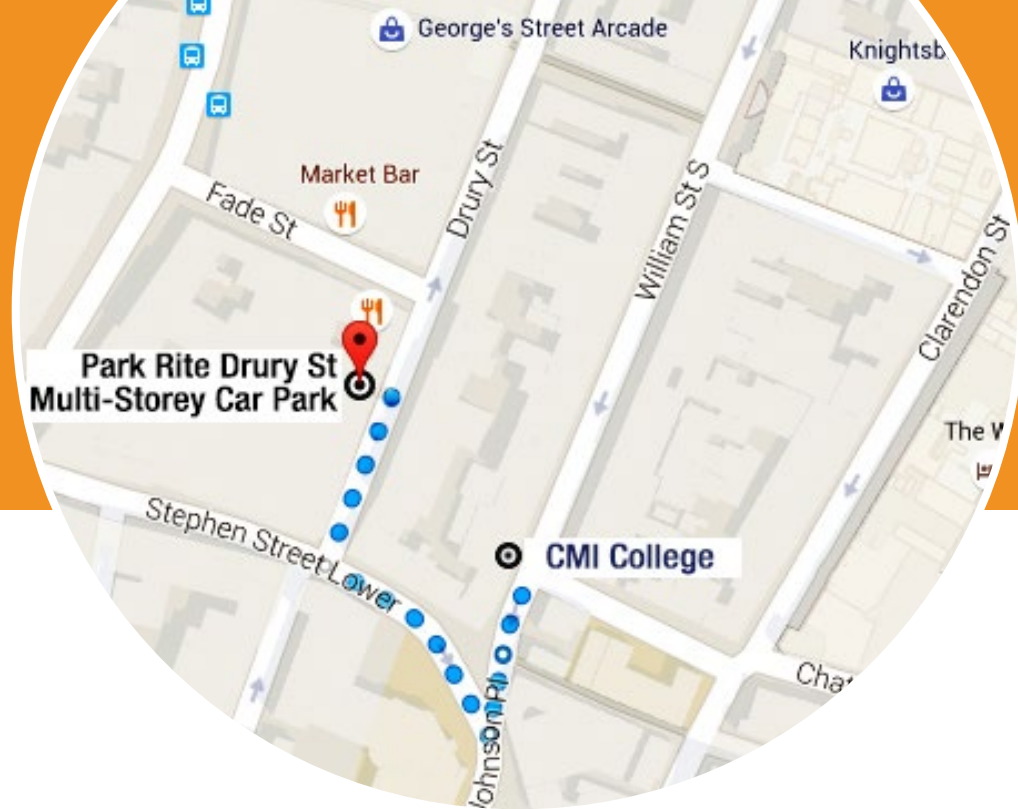


## Online Bookings

To enroll, please apply online by logging onto <https://www.cmi-ireland.com/apply-online> by the deadline date.

A deposit of €300 (to be paid by laser or visa card) must accompany your online booking to secure your place on the course.

The balance of course fees must be paid before commencement of the course.



- A **unique** location
- A **space** to learn
- In the **heart** of the city
- **One night** per week

College: CMI, 34-35 South William Street, Dublin 2

Office: 14A Cashel Business Centre, Cashel road, Dublin 12

T. 01 4927070 W. [cmi-ireland.com](http://cmi-ireland.com)

E. [info@cmi-ireland.com](mailto:info@cmi-ireland.com)